

Mounting systems for solar technology



ASSEMBLY INSTRUCTIONS
D-DOME SYSTEM

GB

TABLE OF CONTENTS

TABLE OF CONTENTS	2
THE COMPANY	3
SAFETY REGULATIONS	4
MATERIALS REQUIRED	5
TOOLS REQUIRED	7
ASSEMBLY	9
TERMS AND CONDITIONS	17
NOTES	21



PARTNER WITH A SYSTEM

With sophisticated, fully developed product ideas and obvious customer-orientation, K2 Systems is your friendly partner in the field of mounting systems for solar technology. International customers appreciate the tried and tested designs for use on roofs and in outdoor and individual solutions.

Mounting systems from K2 Systems impress with their attractive design and many well thought-out details. High grade materials and quality workmanship guarantee outstanding functionality and durability.

Our products consist of few yet perfectly matching components - this reduces the amount of material used, simplifies assembly while saving time and money.

As an energetic, experienced company, and in keeping with the times, we benefit from cooperation as partners in order to ensure the dynamic development of our company. The experiences from the personal dialogue with our customers forms the basis for permanent optimisation of our range of products. The team of K2 Systems looks forward to a successful cooperation with you.

TESTED QUALITY – FOUR CERTIFICATIONS

K2 Systems stands for secure connection, highest quality and precision. Our customers and business partners have already known that for a long time. And three independent institutes have tested, confirmed and certified our capabilities and components.



GENERAL SAFETY INSTRUCTIONS

Please be aware that our General Assembly Regulations must be adhered to.

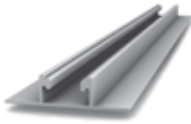
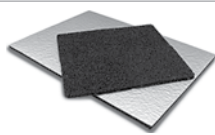





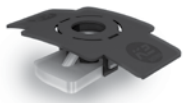
They can be viewed under www.k2-systems.com/en/downloads/product-information.html



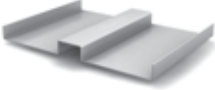

In general, the following applies:

- Systems may only be installed and put into use by people who can ensure the proper carrying-out of the work due to their technical suitability (e.g. training or occupation) and/or experience.
- Before assembly, it must be checked that the product meets the local static requirements. For roof systems, the load-bearing capacity of the roof has to be checked in principle.
- National and local building regulations, standards and environmental regulations are always to be adhered to.
- Work safety and accident prevention regulations and corresponding standards and regulations of occupational associations are to be adhered to! In particular, it is to be ensured that:
 - Safety clothing is worn (especially safety helmets, work shoes and gloves).
 - For work on roofs, the regulations for working on roofs are to be adhered to (e.g. use of anti-fall guards, scaffolding with arrestor equipment from an eaves height of 3m etc.)
 - Presence of two people is vital for the entire course of the assembly, so that swift help can be ensured in the case of an accident.
- K2 mounting systems are constantly being developed further. Because of this, assembly procedures can change. Therefore, before assembly, always check that the assembly instructions are up-to-date under www.k2-systems.com/en/downloads/product-information.html. We can also send you the latest version on request.
- The assembly instructions of the module manufacturer are to be adhered to.
- Earthing must be ensured, use lightning arrestor clamp if necessary.
- During the entire assembly time it is to be ensured that at least one copy of the assembly instructions is available on site.
- In the event of non-adherence to our General Safety Instructions and if competitor's parts are built in or attached, K2 Systems GmbH reserves the right to refuse liability.
- With disregarding our general installation and assembly instructions and not using all system components and assemblies according to these instructions as well when components are used, which were not obtained from us, K2 Systems is not liable for any resulting defects and damages. Warranty is excluded in such cases.
- If all safety instructions are adhered to and the system is correctly installed, there is a product warranty entitlement of 12 years! Please read out Terms and Conditions of Warranty which can be viewed under www.k2-systems.com/en/downloads/product-information.html. We can also send them to you on request.
- The dismantling of the system takes place according to the assembly steps, in reverse order.
- K2 components made of stainless steels are available in different corrosion resistance classes. In every case, the expected corrosion exposure of each structure or component must be checked.




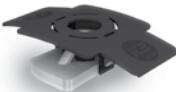


ESSENTIAL: THE MATERIALS REQUIRED

In order to assemble the K2 Systems D Dome installation system, the following listed system components are essential. The piece quantities are calculated on the basis of the respective requirements. The listed item numbers facilitate the comparison of items.

	FlatRail 22; 6,10 m	1000169
	Material: Aluminium	
	Alternative: SpeedRail 22 2,10 m	1003933
	SpeedRail 22 4,20 m	1003379
	SpeedRail 22 6,10 m	1001163
	Building protection mat 6 mm	1006200
	Material: PUR bound rubber granules with aluminium triplex foil, laminated	
	Alternative: Building protection mat 6 mm	1006199
	Material: Unlaminated PUR-bonded rubber granulate	
	Alternative: Building protection mat 20 mm	2000084
	Dimensions: 1200x100 mm	
The respective use of a laminated or unlaminated building protection mat depends on the material of the roof membrane and must thus be checked on site.		
	FlatConnector Set SpeedRail/FlatRail	1006039
	Material: Aluminium	
	K2 Dome SD	1005842
	Width: 90 mm Material: Aluminium	
	K2 Dome D1000	1005840
	Material: Aluminium, Width: 90 mm	
	Alternative: K2 Dome D800, Width: 90 mm	1005839
	Allen Bolt DIN 912	item number system-specific
	EN ISO 4762 M8	
Material: stainless steel		
	Washer	1000473
	Material: stainless steel	
	M K2 slot nut with clip	1001643
	Material: stainless steel, plastic	

	Module End Clamp Standard Material: Aluminium	item number system-specific
	Alternative: End clamps Set Standard	
	Module Middle Clamp Standard Material: Aluminium	1005131
	Alternative: Middle clamps Set Standard	
	Optional: K2 Scale Dome for ballasting Material: Aluminium	1005838
	Optional: K2 Porter for ballasting L-Profile for placing potentially required ballast Material: Aluminium	2000081

**SYSTEM VARIANT 1/4 CLAMPING UNIT FOR NON-APPROVED MODULES
OR HIGHER LOAD REQUIREMENTS.
ADDITIONALLY REQUIRED MATERIAL:**

	K2 FlexClamp Two-piece clamp set for fastening the modules in the 1/4 points including M8 x 25 Allen bolt, M8x20 Allen bolt M8 x 20, M K2 and locking washers Suitable for module frame heights of 34-50 mm. 4 sets required per module. Material: Aluminium	1005875
	Allen Bolt DIN 912 EN ISO 4762 M8 Material: stainless steel	1000190
	Washer Material: stainless steel	1000473
	M K2 slot nut with clip Material: stainless steel, plastic	1001643
	K2 Connector L-bracket for coupling of module rows Support of ballasting potentially required Material: Aluminium	1005874
	Dome SD / Dome D1000 / Dome D800 Please note that for this assembly variant the number of Dome D1000/ Dome D800/ Dome SD pieces increases .	

AT A GLANCE: OVERVIEW OF THE TOOLS

K2 Systems mounting systems are designed to ensure effortless assembly. Only the tools that are required are not included in the scope of supply. Here we have listed them together for ease of reference.



Torque wrench
With attachment for HW 6



Chalk line



Measuring tape

IN GENERAL:

- The General Installation Instructions must be adhered to.
These can be found at: www.k2-systems.com/en/downloads/product-information.html
- Should you not have login details for our customer area, please contact us and we will send them to you.
- This system can be installed for all standard flat roofs with pressure-resistant substrates and a roof pitch of up to 5 degrees. The elevation angle is 10°.
- It is recommended to place a separation layer between the roofing and the rail prior to laying the FlatRail/ SpeedRail in order to protect the roofing. The rail is positioned directly on the separation layer without roof penetration. The compatibility of the building protection mat for the particular roof covering must be checked on site.
- Minimum distance to roof edge: 500 mm.
- At least 3 rows of three double elevation systems (a total of 6 modules) must be installed consecutively in order to use this system.
- The K2 D-Dome D1000 or D800 System is suitable for modules with a frame height of 30 - 50 mm. This system is not suitable for thin-film modules.
- Modules with a length of 1.58 to 1.68 m can be used. For module widths of 950 to 1050 mm, the Dome D1000 is fitted, for module widths between 780 and 840, the Dome D800.
- After 16.0 m and up to 18.3 m rail length it is necessary to provide for a thermal separation of max.15 cm.
- For the installation of the D-Dome D1000 or D800 Systems, only standard clamps may be fitted. The K2 AddOn may not be used.
- It is essential to clarify, from the start, whether there is a module manufacturer's approval available for the clamping on the short side of the D-Level Dome D1000 or D800 installation systems. You can obtain the approval list from your customer consultant or at www.k2-systems.de. If no module approval is available, or if the occurring loads exceed 2750 Pa, the alternative D-Dome installation system with Flex Clamp and 1/4 clamping unit should be used!
- Because of the different orientation of the solar modules, the string and inverter connection must be appropriately observed. It is recommended that the inverters and strings are connected separately.
- If required, paving blocks can be inserted in the base plate of the Scale Dome for ballasting on the FlatRail / SpeedRail. For higher ballast we recommend using the K2 Porter.

INSTALLATION OF D-DOME SYSTEM: STEP BY STEP



1
of 8

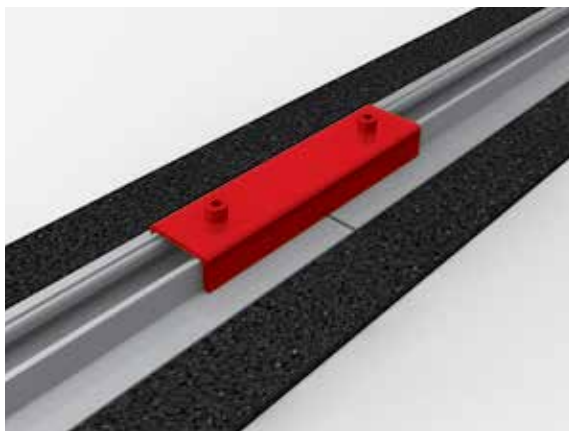
POSITION FLATRAIL

These assembly instructions only apply to flat roofs with a maximum roof pitch of 5°.

It is recommended to place a separation layer between the roofing and the rail prior to laying the flat rail in the form of a building protection mat in order to protect the roofing. The building protection mat is installed with the aluminium concealed side facing downwards. The FlatRail is positioned directly on the separation layer without roof penetration. The parallel distance between the individual FlatRails is defined by the dimensions of the modules. For a standard clamp, the recommended distance between two rails corresponds to the module length plus 20 mm.

The building protection mats must be laid at the joint with a separation of approx. 10 cm, in order to allow any accumulated water to flow off.

Materials required: FlatRail, building protection mat



2
of 8

INSTALL RAIL CONNECTORS

Two FlatRails are connected at the rail joint using a rail connector. This locks the FlatRails in the longitudinal direction. Insert 2 M K2 slot nuts in the rail and turn 90° clockwise to lock. Fasten rail connectors with 2 M8 Allen bolts and one locking washer each. The connector should be between the Dome D1000 and Dome SD.

If the rail lengths permit, the rail joint can also be positioned directly below the Dome D1000 without a rail connector. However, it must be ensured that the joint is between the two fittings and under no circumstances directly at the screw position.

Torque 14 Nm

Materials required: FlatConnector Set



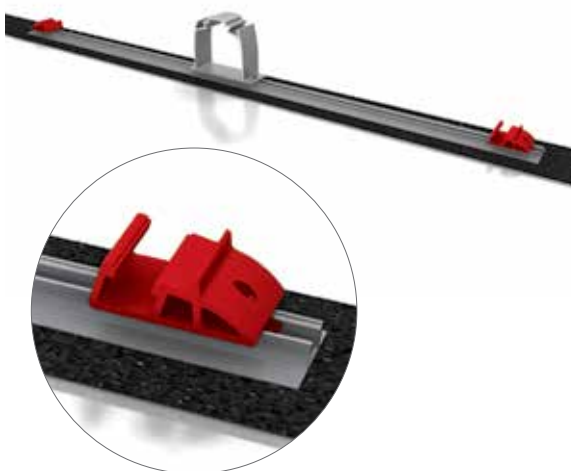
3
of 8

FIT DOME D1000

Insert two M K2 slot nuts in the rail and turn 90° clockwise until they lock. Thereafter, position the Dome D1000 on the rail and fasten with two M8 x 20 Allen bolts and S8 locking washers.

Torque: 16 Nm

Materials required: Dome D1000, M K2, Allen bolt DIN 912 M8 x 20, S8 locking washer



4
of 8

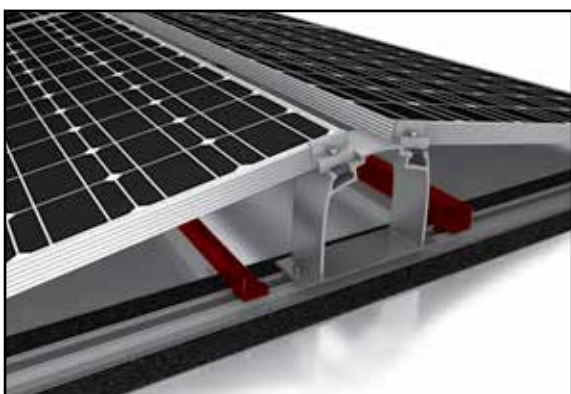
FIT DOME SD

Insert one M K2 in the rail on each side of the Dome D1000 and turn 90° clockwise until they lock. Then, position two Dome SDs on to the rail and secure tightly with an M8x20 Allen bolt and S8 locking washer.

Align both Dome SDs as per the adjacent figure.

The distance between Dome SD and Dome D1000 is approximately equal to the module width.

Materials required: Dome SD, M K2, Allen bolt DIN 912 M8 x 20, S8 locking washer



4b
von 8

OPTIONAL: BALLAST SYSTEM

The L-Profiles are fastened to the rails with the screws, locking washers and M K2 included in the set. The spacing of the L-Profiles depends on the size of the ballast stones used.

The Porters can be positioned both centrally to the Dome 800/1000, or laterally to the middle Dome.

Each Porter set can be ballasted with up to 140 kg.

Alternatively, if only light ballasting is required, the Scale Dome can be used (see step 7)

Materials required: K2 Porter, M K2, Allen bolt DIN 912 M8 x 20

5
of 8

POSITION MODULES AND DOME SD SCREW IN

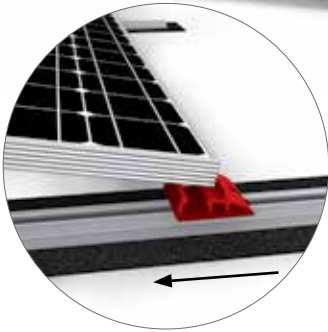
The modules are laid horizontally, in the centre of two Dome D1000s. The specially affixed bars serve as the stop. Thereafter, the module is positioned on two Dome SDs. The lightly secured Dome SDs are pushed to the stop in direction of the module and screwed in.

Torque: 16 Nm.

Attention:

Only modules approved for clamping may be used on the short side, see point „GENERAL RULES“ on page 8 and the note on page 12. Please take care not to cover any drainage holes in modules, as otherwise potential condensation cannot run off.

Materials required: Module



6
of 8

FASTEN MODULE

First, insert the M K2 slot nut into the nut of the Dome SD and the Dome D1000 and turn 90° clockwise.

Screw the modules at the end of each row with end clamps, DIN 912 M8 screws and S8 locking washers into the slot nuts. If the end and mid clamp set is supplied, fasten the entire set in the groove.

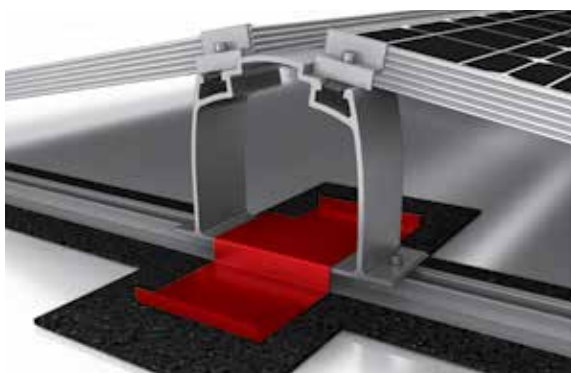
Use two standard middle clamps each between two modules which are also fastened with DIN 912 M8 screws and S8 locking washers in the slot nuts.

Alternatively, XS mid clamps can be used. However, longer screws must be used in this case.

Torque: 14 Nm.

Materials required: End/ mid clamp, M K2, DIN 912 M8 Allen bolt, S8 locking washer





7
of 8

BALLAST THE SYSTEM

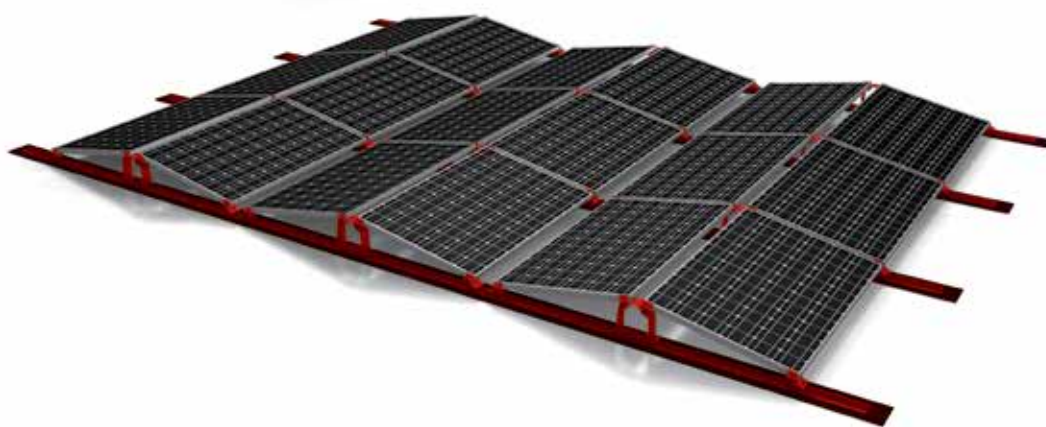
For some roof areas the system might need to be additionally ballasted against any wind suction that may occur. To do this, simply insert the Scale Dome into the hollow chamber of the Dome D1000. The roof covering beneath the Scale should be protected with additional building protection mats.

Depending on requirements, up to 5 ballast stones (dimensions LxWxH 200 x 100 x 800 mm) can be fitted according to the adjacent illustration.

If heavier ballasting is required, additional Scale Domes including stones must be added to the side of the Dome D1000 for ballast.

If only light ballasting is required, a single ballast stone can be inserted directly into the hollow chamber of the Dome D1000.

Materials required: Scale Dome, stones for ballasting, building protection mat



8
of 8

OVERALL SYSTEM, CORNER CLAMPING

Due to the double-sided orientation of the modules and the elevation angle of 10°, the rows can generally be installed next to each other without shading clearance. However, we recommend that for potential maintenance work a foot-wide gap is left between the modules.

ALTERNATIVE SYSTEM VARIANT: DOME D800



1b
of 1

POSITION FLATRAIL

For module widths between 798 and 819 mm, the Dome D1000 is replaced by the Dome D800. The installation itself is the same, only the distance between the Domes is different.

Attention:

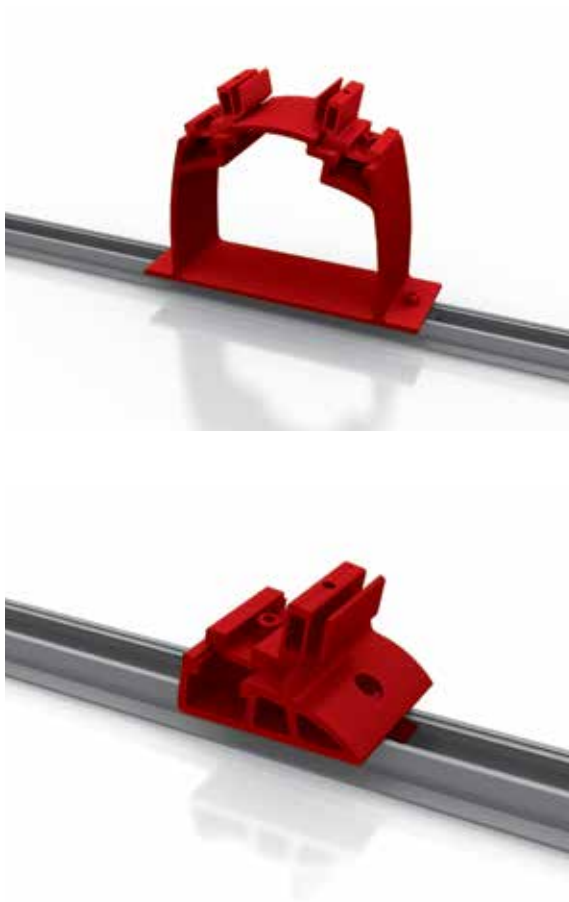
If no module manufacturer's approval is available for clamping on the short side of the module, or if the occurring loads exceed 2750 Pa, then the alternative installation system D-Dome with Flex Clamp and 1/4 clamping unit must be used! Please take care not to cover any drainage holes in modules, as otherwise potential condensation cannot run off.

ALTERNATIVE SYSTEM VARIANT: 1/4 CLAMPING UNIT

THE FOLLOWING ALSO APPLIES:

- The system is approved for snow loads of up to 4 kN/m² and wind loads of up to 1.3 kN/m².
- The K2 D-Level Dome D1000 or D800 System is suitable for modules with a frame height of 34 - 50 mm. In general, thin-film modules may not be used with this system.
- For the installation of the D-Level Dome D1000 or D800 Systems, only the additional clamp sets may be fitted. The K2 AddOn may not be used.
- If required, paving blocks can be inserted in L-bracket for ballasting.

STEPS 1-4 SEE PAGE 9 AND 10



5c
of 9

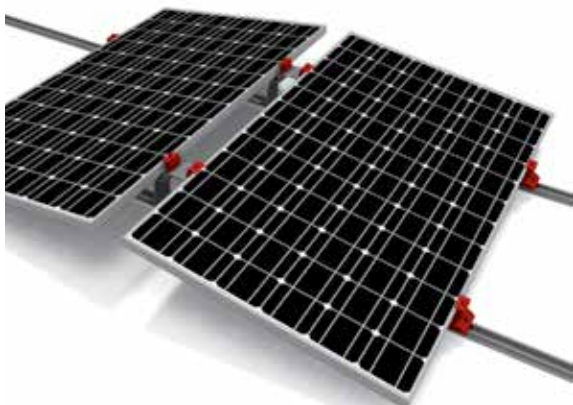
PRE-MOUNT CLAMP SETS ON DOMES.

The parallel distance between the individual flat rails is defined by the dimensions of the modules and their clamping area. For a standard module, the recommended distance between the FlatRails corresponds to half of the module length. In individual cases, the module installation instructions for the clamp area must be adhered to.

Insert the pre-mounted middle piece of the FlexClamp Set into the nuts of the domes and secure by tightening the screw.

Torque: 14 Nm

Materials required: Dome1000, Dome SD, M K2, middle piece of the FlexClamp Set including DIN 912 M8x20 Allen bolt, S8 locking washer



6c
of 9

POSITION MODULE AND DOME SD SCREW IN

The modules are laid horizontally, in the centre of two D1000 domes. Thereafter, the module is positioned on two Dome SDs. The lightly fastened Dome SDs are pushed to the stop in direction of the module and screwed in.

Torque: 16 Nm.

Materials required: Module



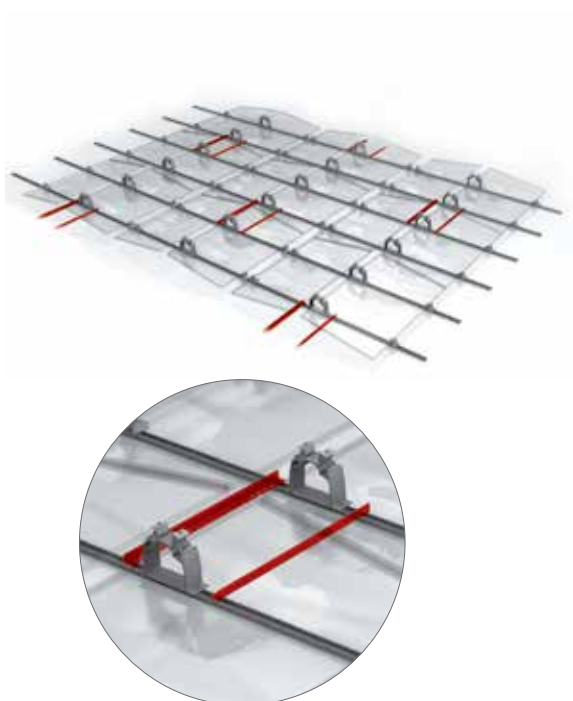
7c
of 9

FASTEN MODULE

The upper part of the clamp set is positioned on the modules. The upper part is guided through the middle piece. The upper part is screwed to the middle piece with the supplied screws and washers.

Torque: 14 Nm.

Materials required: Upper part of the FlexClamp Set including M8 x 25 Allen bolt and S8 locking washer



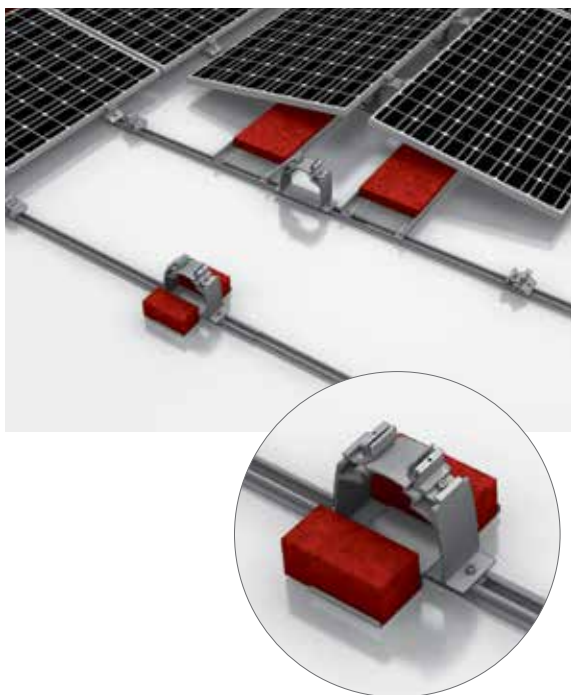
8c
of 9

COUPLING OF ROWS

As the rows are not coupled to each other as is the case with the D-Dome System, this must be performed separately. For this, the L-bracket can be screwed directly on to the flat rail or together with the Dome D1000/800.

A minimum of 3 rows per double elevation systems must be coupled.

The number and exact position of the coupling angle depends on the wind loads at the location and the required ballasting and must be planned according to the individual system.



9c
of 9

BALLASTING THE SYSTEM

For some roof areas the system might need to be additionally ballasted against the wind suction loads that may occur.

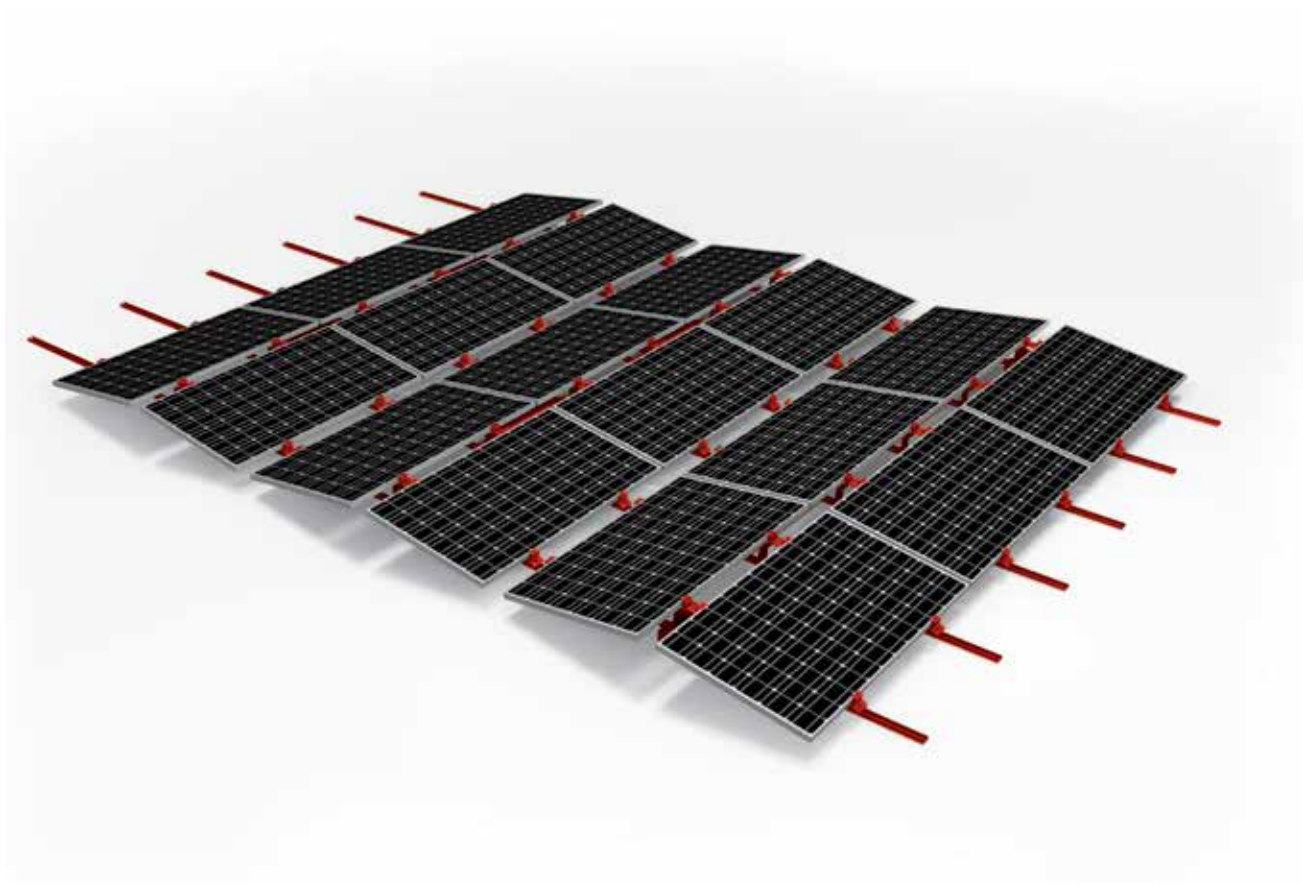
Coupling angles can be used for the additional ballasting. If ballasting is required in the edge area, then the Scale Dome can be used in the same way as for the Dome corner clamping.

SYSTEM VARIANT DOME D800 WITH ADDITIONAL CLAMPS



1d
of 1

For module widths between 798 and 819 mm, the Dome D1000 is replaced with the Dome D800. The installation itself is the same, only the distance between the Domes is different.



Ready!

THANK YOU FOR CHOOSING A K2 MOUNTING SYSTEM.

Systems from K2 Systems are fast and simple to install. We hope these instructions have helped you in this. Please contact us if you have any questions or suggestions for improvements. We are looking forward to receive your call on our

Service-Hotline +49 (0) 7152-3560-0

Terms and Conditions of K2 Solar Mounting Solutions Limited

The Customer's attention is particularly drawn to the provisions of clause 11.

1. INTERPRETATION

1.1 Definitions. In these Conditions, the following definitions apply:

Business Day: a day (other than a Saturday, Sunday or a public holiday) when banks in London are open for business.

Commencement Date: has the meaning set out in clause 2.2.

Conditions: these terms and conditions as amended from time to time in accordance with clause 14.8.

Contract: the contract between the Supplier and the Customer for the supply of Goods and/or Services in accordance with these Conditions.

Customer: the person or firm who purchases the Goods and/or Services from the Supplier.

Delivery Location: has the meaning set out in clause 4.1.

Force Majeure Event: has the meaning given to it in clause 14.1(a).

Goods: the goods (or any part of them) set out in the Order. Intellectual Property Rights: all intellectual property rights (including but not limited to, patents trade marks and domain names) in each case whether registered or unregistered and including all applications for and renewals or extensions of such rights, and all similar or equivalent rights or forms of protection in any part of the world.

Order: the Customer's order for the supply of Goods and/or Services, as set out in the Customer's purchase order form, or the Customer's written acceptance of the Supplier's quotation, or overleaf, as the case may be.

Services: the services supplied by the Supplier to the Customer as set out in the Service Specification.

Service Specification: the description or specification for the Services provided in writing by the Supplier to the Customer.

Supplier: K2 Solar Mounting Solutions Limited registered in England and Wales with company number 07688136 whose registered office is at K2 Solar Mounting Solutions Limited Unit 46 Easter Park Benyon Road RG7 2PQ Aldermaston, England.

1.2 Construction. In these Conditions, the following rules apply:

- a person includes a natural person, corporate or unincorporated body (whether or not having separate legal personality);
- a reference to a party includes its personal representatives, successors or permitted assigns;
- a reference to a statute or statutory provision is a reference to such statute or statutory provision as amended or re-enacted. A reference to a statute or statutory provision includes any subordinate legislation made under that statute or statutory provision, as amended or re-enacted;
- any phrase introduced by the terms including, include, in particular or any similar expression shall be construed as illustrative and shall not limit the sense of the words preceding those terms; and
- a reference to writing or written includes faxes and e-mails.

2. BASIS OF CONTRACT

- The Order constitutes an offer by the Customer to purchase Goods and/or Services in accordance with these Conditions. The Customer is responsible for ensuring that the Order and/or Service Specification are complete and accurate.
- The Order shall only be deemed to be accepted when the Supplier issues written acceptance of the Order at which point the Contract shall come into existence (Commencement Date).
- The Contract constitutes the entire agreement between the parties. The Customer acknowledges that it has not relied on any statement, promise or representation made or given by or on behalf of the Supplier which is not set out in the Contract.
- Any samples, drawings, descriptive matter or advertising issued by the Supplier and any descriptions of the Goods or illustrations or descriptions of the Services contained in the Supplier's catalogues or brochures are issued or published for the sole purpose of giving an approximate idea of the Services and/or Goods described in them. They shall not form part of the Contract or have any contractual force.
- These Conditions apply to the Contract to the exclusion of any other terms that the Customer seeks to impose or incorporate, or which are implied by trade, custom, practice or course of dealing.
- Any quotation given by the Supplier shall not constitute an offer, and is only valid for a period of 10 Business Days from its date of issue.
- All of these Conditions shall apply to the supply of both Goods and Services except where application to one or the other is specified.

3. GOODS

- The Goods are described in the Order.
- The Supplier reserves the right to amend the specification of the Goods if required by any applicable statutory or regulatory requirements.

- The Supplier reserves the right to make minor modifications to the specification of the Goods and the Services Specification. In particular, the Customer must accept any commercially customary deviations in quality, quantity, weight or other deviations unless explicitly agreed otherwise in writing.

4. DELIVERY OF GOODS

- The Supplier shall deliver the Goods to the location set out in the Order or such other location as the parties may agree (Delivery Address) at any time after the Supplier notifies the Customer that the Goods are ready.
- Delivery of the Goods shall be completed on delivery to or collection of the Goods by the carrier appointed by the Supplier to transport to the Delivery Address.
- At the Customers' request and expense, the Goods shall be insured against the risks identified by the Customer.
- Any dates quoted for delivery of the Goods are approximate only, and the time of delivery is not of the essence. The Supplier shall not be liable for any delay in delivery of the Goods that is caused by a Force Majeure Event or the Customer's failure to provide the Supplier with adequate delivery instructions or any other instructions that are relevant to the supply of the Goods.
- If the Supplier fails to deliver the Goods, its liability shall be limited to the costs and expenses incurred by the Customer in obtaining replacement goods of similar description and quality in the cheapest market available, less the price of the Goods. The Supplier shall have no liability for any failure to deliver the Goods to the extent that such failure is caused by a Force Majeure Event or the Customer's failure to provide the Supplier with adequate delivery instructions for the Goods or any relevant instruction related to the supply of the Goods.
- If the Customer fails to accept or take delivery of the Goods within 3 Business Days of the Supplier notifying the Customer that the Goods are ready, then except where such failure or delay is caused by a Force Majeure Event or by the Supplier's failure to comply with its obligations under the Contract in respect of the Goods:
 - delivery of the Goods shall be deemed to have been completed at 9.00 am on the fourth Business Day following the day on which the Supplier notified the Customer that the Goods were ready; and
 - the Supplier shall store the Goods until delivery takes place, and charge the Customer for all related costs and expenses (including insurance).
- If 14 Business Days after the Supplier notified the Customer that the Goods were ready for delivery the Customer has not accepted or taken delivery of them, the Supplier may resell or otherwise dispose of part or all of the Goods or a storage charge may be applied.
- The Supplier may deliver the Goods by instalments, which shall be invoiced and paid for separately. Each instalment shall constitute a separate contract. Any delay in delivery or defect in an instalment shall not entitle the Customer to cancel any other instalment.

5. QUALITY OF GOODS

- Unless otherwise agreed in writing the Goods are not intended for use in life-sustaining or life-supporting devices and systems, nuclear power plants, for military purpose, aerospace or other purposes where failure or misuse of the product can reasonably lead to life-threatening situations or cause catastrophic consequential damage.
- If the Customer uses the Goods in the circumstances described in clause 5.1, this shall occur at the Customer's own risk and sole responsibility. The Customer hereby indemnifies and holds harmless both the Supplier and the manufacturer on demand from any liability resulting from the use of Goods and Services in the circumstances described in clause 5.1, including the cost of an appropriate legal defence.
- Subject to clause 5.7, the Supplier shall pass on to the Customer the benefit under the manufacturers' warranties relating to the relevant Goods. If there is any defect or malfunction or any other problem relating to the quality or design of the Goods, the Customer must deal directly with the manufacturer although the Supplier will offer reasonable assistance to the Customer in such matters. The total liability of the Supplier for the design and quality of the Goods shall be limited to the benefit passed on to the Customer under the manufacturers' warranties.
- Subject to clause 5.6, if:
 - the Customer gives notice in writing to the Supplier within a reasonable time of discovery that some or all of the Goods do not comply with the warranty set out in clause 5.3; or
 - the Customer gives notice in writing to the Supplier within 3 Business Days of the date of delivery, for Goods damaged in transit to the Delivery Location; and
 - the Supplier is given a reasonable opportunity of examining such Goods; and

- (d) the Customer (if asked to do so by the Supplier) returns such Goods to the Supplier's place of business at the Customer's cost, the Supplier shall, at its option, repair or replace the defective Goods or Services, or refund the price of the defective Goods or Services in full.
- 5.5 Returns of Goods to the Supplier will only be accepted if the Goods returned are damaged or defective and the Customer follows the process set out in clause 5.4.
- 5.6 The Supplier shall not be liable for the failure of the Goods to comply with the warranty in clause 5.3 if:
 - (a) the Customer makes any further use of such Goods after giving a notice in accordance with clause 5.4;
 - (b) the defect arises because the Customer failed to follow the Supplier's or manufacturer's oral or written instructions as to the storage, installation, commissioning, use or maintenance of the Goods or (if there are none) good trade practice;
 - (c) the Customer alters or repairs such Goods without the written consent of the Supplier;
 - (d) the defect arises as a result of fair wear and tear, wilful damage, negligence, or abnormal working conditions;
- 5.7 Except as provided in this clause 5, the Supplier shall have no liability to the Customer in respect of the Goods' failure to comply with the warranty set out in clause 5.3.
- 5.8 The terms of These Conditions shall apply to any repaired or replacement Goods supplied by the Supplier under clause 5.4.

6. TITLE AND RISK

- 6.1 The risk in the Goods shall pass to the Customer on completion of delivery.
- 6.2 Title to the Goods shall not pass to the Customer until the Supplier has received payment in full (in cash or cleared funds) for:
 - (a) the Goods; and
 - (b) any other goods that the Supplier has supplied to the Customer.
- 6.3 Until title to the Goods has passed to the Customer, the Customer shall:
 - (a) hold the Goods on a fiduciary basis as the Supplier's bailee;
 - (b) store the Goods separately from all other goods held by the Customer so that they remain readily identifiable as the Supplier's property;
 - (c) not remove, deface or obscure any identifying mark or packaging on or relating to the Goods;
 - (d) maintain the Goods in satisfactory condition and keep them insured against all risks for their full price on the Supplier's behalf from the date of delivery;
 - (e) notify the Supplier immediately if it becomes subject to any of the events listed in clause 12.1(b); and
 - (f) give the Supplier such information relating to the Goods as the Supplier may require from time to time, but the Customer may resell or use the Goods in the ordinary course of its business.
- 6.4 If before title to the Goods passes to the Customer the Customer becomes subject to any of the events listed in clause 12.1(b), or the Supplier reasonably believes that any such event is about to happen and notifies the Customer accordingly, then, provided the Goods have not been resold, or irrevocably incorporated into another product, and without limiting any other right or remedy the Supplier may have, the Supplier may at any time require the Customer to deliver up the Goods and, if the Customer fails to do so promptly, enter any premises of the Customer or of any third party where the Goods are stored in order to recover them.

7. SUPPLY OF SERVICES

- 7.1 The Supplier shall provide the Services to the Customer in accordance with the Service Specification in all material respects.
- 7.2 The Supplier shall use all reasonable endeavours to meet any performance dates for the Services specified in the Service Specification, but any such dates shall be estimates only and time shall not be of the essence for the performance of the Services.
- 7.3 The Supplier shall have the right to make any changes to the Services which are necessary to comply with any applicable law or safety requirement, or which do not materially affect the nature or quality of the Services, and the Supplier shall notify the Customer in any such event.
- 7.4 The Supplier warrants to the Customer that the Services will be provided using reasonable care and skill.

8. CUSTOMER'S OBLIGATIONS

- 8.1 The Customer shall:
 - (a) ensure that the terms of the Order are complete and accurate;
 - (b) co-operate with the Supplier in all matters relating to the Services;
 - (c) provide the Supplier, its employees, agents, consultants and subcontractors, with access to its premises, office accommodation and other facilities as reasonably required by the Supplier to provide the Services;

- (d) provide the Supplier with such information and materials as the Supplier may reasonably require to supply the Services, and ensure that such information is accurate in all material respects.
- 8.2 If the Supplier's performance of any of its obligations in respect of the Services is prevented or delayed by any act or omission by the Customer or failure by the Customer to perform any relevant obligation (Customer Default):
 - (a) the Supplier shall without limiting its other rights or remedies have the right to suspend performance of the Services until the Customer remedies the Customer Default, and to rely on the Customer Default to relieve it from the performance of any of its obligations to the extent the Customer Default prevents or delays the Supplier's performance of any of its obligations;
 - (b) the Supplier shall not be liable for any costs or losses sustained or incurred by the Customer arising directly or indirectly from the Supplier's failure or delay to perform any of its obligations as set out in this clause 8.2; and
 - (c) the Customer shall reimburse the Supplier on written demand for any costs or losses sustained or incurred by the Supplier arising directly or indirectly from the Customer Default.

9. CHARGES AND PAYMENT

- 9.1 The price for Goods shall be the price set out in the Order or, if no price is quoted, the price set out in the Supplier's published price list as at the date of delivery. The price of the Goods is exclusive of all costs and charges of packaging, insurance, transport of the Goods, which shall be paid by the Customer when it pays for the Goods.
- 9.2 In respect of Goods and Services, the Supplier shall invoice the Customer on the date of Delivery (unless otherwise agreed in writing between the parties).
- 9.3 The Customer shall pay each invoice submitted by the Supplier:
 - (a) on the date of Delivery (unless otherwise agreed in writing between the parties); and
 - (b) in full and in cleared funds to a bank account nominated in writing by the Supplier, and time for payment shall be of the essence of the Contract.
- 9.4 All amounts payable by the Customer under the Contract are exclusive of amounts in respect of value added tax chargeable from time to time (VAT). Where any taxable supply for VAT purposes is made under the Contract by the Supplier to the Customer, the Customer shall, on receipt of a valid VAT invoice from the Supplier, pay to the Supplier such additional amounts in respect of VAT as are chargeable on the supply of the Services or Goods at the same time as payment is due for the supply of the Services or Goods.
- 9.5 Without limiting any other right or remedy of the Supplier, if the Customer fails to make any payment due to the Supplier under the Contract by the due date for payment (Due Date), the Supplier shall have the right to charge interest on the overdue amount at the rate of 4% per cent per annum above the then current Lloyds TSB Bank Plc's base rate accruing on a daily basis from the Due Date until the date of actual payment of the overdue amount, whether before or after judgment, and compounding quarterly.
- 9.6 The Customer shall pay all amounts due under the Contract in full without any deduction or withholding except as required by law and the Customer shall not be entitled to assert any credit, set-off or counterclaim against the Supplier in order to justify withholding payment of any such amount in whole or in part. The Supplier may, without limiting its other rights or remedies, set off any amount owing to it by the Customer against any amount payable by the Supplier to the Customer.

10. INTELLECTUAL PROPERTY RIGHTS

- 10.1 All Intellectual Property Rights in or arising out of or in connection with the Services shall be owned by the Supplier.
- 10.2 The Customer acknowledges that, in respect of any third party Intellectual Property Rights in the Services, the Customer's use of any such Intellectual Property Rights is conditional on the Supplier obtaining a written licence from the relevant licensor on such terms as will entitle the Supplier to license such rights to the Customer.

11. LIMITATION OF LIABILITY

The Customer's attention is particularly drawn to this clause

- 11.1 Nothing in these Conditions shall limit or exclude the Supplier's liability for:
 - (a) death or personal injury caused by its negligence, or the negligence of its employees, agents or subcontractors;
 - (b) fraud or fraudulent misrepresentation;
 - (c) breach of the terms implied by section 2 of the Supply of Goods and Services Act 1982 (title and quiet possession);
 - (d) breach of the terms implied by section 12 of the Sale of Goods Act 1979 (title and quiet possession); or
 - (e) defective products under the Consumer Protection Act 1987.

11.2 Subject to clause 11.1:

- (a) the Supplier shall under no circumstances whatever be liable to the Customer, whether in contract, tort (including negligence), breach of statutory duty, or otherwise, for any loss of profit, or any indirect or consequential loss arising under or in connection with the Contract ; and
 - (b) the Supplier's total liability to the Customer in respect of all other losses arising under or in connection with the Contract, whether in contract, tort (including negligence), breach of statutory duty, or otherwise, shall in no circumstances exceed the value of the Goods.
- 11.3 Except as set out in these Conditions, all warranties, conditions and other terms implied by statute or common law are, to the fullest extent permitted by law, excluded from the Contract.
- 11.4 For K2 products the Terms of Guarantee apply as can be viewed at <http://www.k2-systems.com/en/downloads/product-information.html> .
- 11.5 This clause 11 shall survive termination of the Contract.

12. TERMINATION

- 12.1 Without limiting its other rights or remedies, the Supplier may terminate the Contract with immediate effect by giving written notice to the other party if:
- (a) the other party commits a material breach of its obligations under this Contract and (if such breach is remediable) fails to remedy that breach within 7 Business Days after receipt of notice in writing of the breach;
 - (b) the other party suspends, or threatens to suspend, payment of its debts or appears to be unable to pay its debts as they fall due or admits inability to pay its debts or (being a company) is deemed unable to pay its debts within the meaning of section 123 of the Insolvency Act 1986 or (being an individual) is deemed either unable to pay its debts or as having no reasonable prospect of so doing, in either case, within the meaning of section 268 of the Insolvency Act 1986 or (being a partnership) has any partner to whom any of the foregoing apply or any similar event occurs or any similar proceedings occur in any other jurisdiction;
 - (c) the other party suspends, threatens to suspend, ceases or threatens to cease to carry on, all or substantially the whole of its business; or
 - (d) by giving written notice to the Customer if the Customer fails to pay any amount due under this Contract on the due date for payment;
 - (e) the Supplier gives the Customer one month's written notice.
- 12.2 Without limiting its other rights or remedies, the Supplier shall have the right to suspend the supply of Services or all further deliveries of Goods under the Contract or any other contract between the Customer and the Supplier if:
- (a) the Customer fails to make pay any amount due under this Contract on the due date for payment; or
 - (b) the Customer becomes subject to any of the events listed in clause 12.1(b), or the Supplier reasonably believes that the Customer is about to become subject to any of them.

13. CONSEQUENCES OF TERMINATION

On termination of the Contract for any reason:

- (a) the Customer shall immediately pay to the Supplier all of the Supplier's outstanding unpaid invoices and interest and, in respect of Services supplied but for which no invoice has yet been submitted, the Supplier shall submit an invoice, which shall be payable by the Customer immediately on receipt;
- (b) the accrued rights and remedies of the parties as at termination shall not be affected, including the right to claim damages in respect of any breach of the Contract which existed at or before the date of termination or expiry; and
- (c) clauses which expressly or by implication have effect after termination shall continue in full force and effect.

14. GENERAL

14.1 Force majeure:

- (a) For the purposes of this Contract, Force Majeure Event means an event beyond the reasonable control of the Supplier including but not limited to strikes, lock-outs or other industrial disputes (whether involving the workforce of the party or any other party), failure of a utility service or transport network, act of God, war, riot, civil commotion, malicious damage, compliance with any law or governmental order, rule, regulation or direction, accident, breakdown of plant or machinery, fire, flood, storm or default of suppliers or subcontractors.
- (b) The Supplier shall not be liable to the Customer as a result of any delay or failure to perform its obligations under this Contract as a result of a Force Majeure Event.

- (c) If the Force Majeure Event prevents the Supplier from providing any of the Services and/or Goods for more than 3 weeks, the Supplier shall, without limiting its other rights or remedies, have the right to terminate this Contract immediately by giving written notice to the Customer.

14.2 Assignment and subcontracting:

- (a) The Supplier may at any time assign, transfer, charge, subcontract or deal in any other manner with all or any of its rights under the Contract and may subcontract or delegate in any manner any or all of its obligations under the Contract to any third party.
- (b) The Customer shall not, without the prior written consent of the Supplier, assign, transfer, charge, subcontract or deal in any other manner with all or any of its rights or obligations under the Contract.

14.3 Notices:

- (a) Any notice or other communication required to be given to a party under or in connection with this Contract shall be in writing and shall be delivered to the other party personally or sent by prepaid first-class post, recorded delivery or by commercial courier, at its registered office (if a company) or (in any other case) its principal place of business, or sent by e-mail to the other party's main fax number or e-mail address.
- (b) Any notice or other communication shall be deemed to have been duly received if delivered personally, when left at such address, if sent by prepaid first-class post or recorded delivery, at 9.00 am on the third Business Day after posting, or if delivered by commercial courier, on the date and at the time that the courier's delivery receipt is signed, or if sent by fax or e-mail, on the next Business Day after transmission.
- (c) This clause 14.3 shall not apply to the service of any proceedings or other documents in any legal action. For the purposes of this clause, "writing" shall not include e-mails and for the avoidance of doubt notice given under this Contract shall not be validly served if sent by e-mail.

14.4 Waiver and cumulative remedies:

- (a) A waiver of any right under the Contract is only effective if it is in writing and shall not be deemed to be a waiver of any subsequent breach or default. No failure or delay by a party in exercising any right or remedy under the Contract or by law shall constitute a waiver of that or any other right or remedy, nor preclude or restrict its further exercise. No single or partial exercise of such right or remedy shall preclude or restrict the further exercise of that or any other right or remedy.
- (b) Unless specifically provided otherwise, rights arising under the Contract are cumulative and to not exclude rights provided by law.

14.5 Severance:

- (a) If a court or any other competent authority finds that any provision of the Contract (or part of any provision) is invalid, illegal or unenforceable, that provision or part-provision shall, to the extent required, be deemed deleted, and the validity and enforceability of the other provisions of the Contract shall not be affected.
- (b) If any invalid, unenforceable or illegal provision of the Contract would be valid, enforceable and legal if some part of it were deleted, the provision shall apply with the minimum modification necessary to make it legal, valid and enforceable.

14.6 No partnership: Nothing in the Contract is intended to, or shall be deemed to, constitute a partnership or joint venture of any kind between any of the parties, nor constitute any party the agent of another party for any purpose. No party shall have authority to act as agent for, or to bind, the other party in any way.

14.7 Third parties: A person who is not a party to the Contract shall not have any rights under or in connection with it.

14.8 Variation: Except as set out in these Conditions, any variation, including the introduction of any additional terms and conditions, to the Contract shall only be binding when agreed in writing and signed by the Supplier.

14.9 Governing law and jurisdiction: This Contract, and any dispute or claim arising out of or in connection with it or its subject matter or formation (including non-contractual disputes or claims), shall be governed by, and construed in accordance with, English law, and the parties irrevocably submit to the exclusive jurisdiction of the courts of England and Wales.

Last revised: August 2012

This image shows a single sheet of white paper with horizontal ruling lines. The lines are evenly spaced and run across the width of the page. There are no margins, text, or other markings on the paper.

K2 Systems GmbH
Riedwiesenstraße 13 – 17
71229 Leonberg | Germany
Tel. +49 (0)7152 3560-0
Fax +49 (0)7152 3560-179
info@k2-systems.com
www.k2-systems.com

Mounting systems for solar technology



K2 Systems GmbH
Riedwiesenstraße 13 - 17
71229 Leonberg
Germany
Phone +49 (0) 7152 - 3560 - 0
Fax +49 (0) 7152 - 3560 - 179
info@k2-systems.com
www.k2-systems.com

Everest Solar Systems, LLC
3809 Ocean Ranch Blvd.
Suite 111
Oceanside, CA 92056
USA
Mobile +1.760.301.5300
info@everest-solarsystems.com
www.everest-solarsystems.com

K2 Systems s.r.l.
Via Madonna dello Schioppo 67
Secondo Piano Int. 17-19
47521 Cesena (FC)
Italy
Tel. +39 0547 63 20 80
Fax +39 0547 63 50 22
info@k2-systems.it
www.k2-systems.it

K2 Systems SARL - Agence FRANCE NORD
14, rue des Hérons
67960 Entzheim
France
Tel. +33 (0) 3 88 21 66 02
Fax +33 (0) 3 88 21 66 03
info@k2-systems.fr
www.k2-systems.fr

K2 Solar Mounting Solutions Ltd.
Unit 46 Easter Park
Benyon Road
Aldermaston, Berkshire RG 7 2PQ
United Kingdom
Tel. +44 (0) 1189 701280
info@k2-systems.uk.com
www.k2-systems.uk.com

K2 Systems SARL - Agence FRANCE SUD
19 Avenue du Pré de Challes
Parc des Glaisins
74940 Annecy le Vieux
France
Tel. +33 (0) 4 50 51 22 53
Fax +33 (0) 4 50 51 16 41
info@k2-systems.fr
www.k2-systems.fr

Montageanleitung D- Dome | GB4 | 1012 | Subject to change.
Product illustrations are exemplary illustrations and may differ from the original.

